

Innova TrackVision

Progress with confidence

Performing needle procedures in the interventional suite frees up your CT system and provides a better access to the patient. However, under fluoroscopic guidance, it may be challenging and time consuming to find the right entry point and advance needle avoiding critical structures.

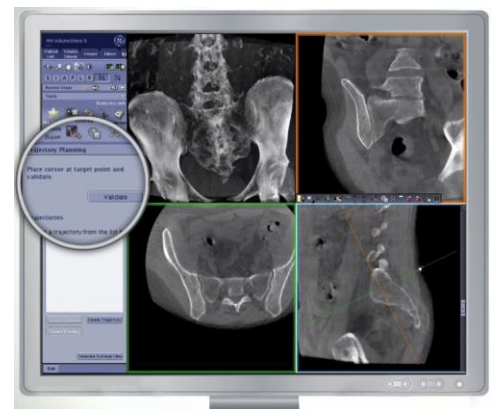
Overview

Innova TrackVision provides live 3D needle guidance during your procedures.

It lets you advance the needle down a planned trajectory overlaid on live fluoroscopy, visualizing any deviations from the desired path.

Highlights

- Support multiple trajectories
- 3D trajectories are registered in real time to C-arm and table movements, field of view and Source-to-Image Distance in real time.
- Visualize patient motion with the bone anatomy overlay and correct it at table side
- Send Bull eye's view angle to the gantry in a single click



Visit us:

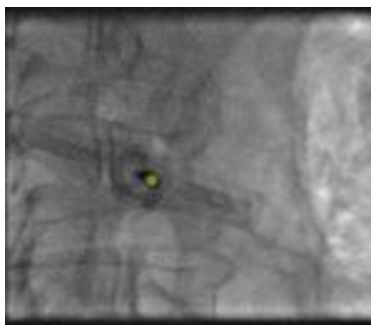
[www.gehealthcare.com/
aw/applications/oncoquant/](http://www.gehealthcare.com/aw/applications/oncoquant/)



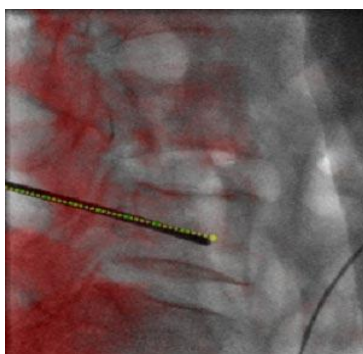
Features

You can use Innova TrackVision in several clinical procedures from biopsies and vertebroplasties to RF ablations. It lets you plan and guide your intervention using 3D models acquired in GE IR suite.

- **Define** multiple needle trajectories on cross sections with Volume Viewer **Trajectory Planning**.
- **Guide** a needle in real time along the planned trajectories:
 - Overlay user-defined trajectories on fluoroscopic images in a single click providing live 3D guidance
 - Trajectories can be extended to see the skin entry point on larger patients
 - Fused 3D trajectory models is registered in real time to C-arm angulations, source-to-image distance, field of view and table motion
 - Bull eye's view angle is automatically computed and can be sent anytime to the gantry helping reach optimal working position and find entry point.



Innova TrackVision bull's eye view.



Innova TrackVision Progress View with Bone Anatomy display for patient motion identification

- Tools are available to help you visualize and compensate patient motion.

System Requirements

- Volume Viewer
- AW VolumeShare 4 or higher

Indications for Use

Innova TrackVision is intended to enable users to load 3D datasets and overlay and register in real time these 3D datasets with fluoroscopic or radiographic images of the same anatomy in order to support catheter/device guidance during interventional procedures.

Regulatory Compliance

This product complies with the European Council Directive 93/42/EEC Medical Device Directive as amended by European Council Directive 2007/47/EC.



GE imagination at work

© 2012 General Electric Company.
All rights reserved. Data subject to change.
GE and GE Monogram are trademarks of General Electric Company.
* Trademark of General Electric Company.